



# OYSTERS KILPATRICK

**FREEZER TO PLATE IN 15 MINUTES**

**6 FROZEN OVEN READY TASMANIAN PACIFIC OYSTERS  
TOPPED WITH PREMIUM BACON AND WORCESTERSHIRE SAUCE  
ON AN OVEN PROOF RECYCLABLE TRAY**

**PRODUCT CODE:** TOC 006

**OUTER CARTON:** 10 Retail Ready Packs approx. 150g each

**INNER DIMENSIONS:** (L) 25.5cm x (W) 4.5cm x (H) 21.5cm

**OUTER DIMENSIONS:** (L) 53cm x (W) 22.5cm x (H) 23.5cm

**OUTER WEIGHT:** Approx. 5.06kg

**SHELF LIFE:** 6 months from frozen date

**STORAGE:** Keep frozen at -18° or colder.

**BARCODES:** INNER-9356765000054 OUTER-9356765000184

**COUNTRY OF ORIGIN:** Australia

**INGREDIENTS:** Farmed Pacific Oysters (*Crassostrea gigas*), Bacon (Pork (85%), Water, Salt, Sugar, Mineral Salts (451, 450), Pork Protein, Antioxidant (316), Preservative (250)), Barbeque Sauce (Fruit Puree (50%), (Water, Tomato Paste, Apple Paste), Sugar, Water, Thickener (1422), Food Acids (Acetic, Citric), Salt, Molasses, Natural Flavours, Spices, Colour (Caramel IV), Xanthan Gum), Tomato Sauce (Tomatoes (from paste) (79%), Sugar, Salt, Food Acids (Acetic, Citric), Natural flavour), Worcestershire Sauce (Water, Vinegar, Molasses, Rehydrated vegetables, Salt, Spices (150d), Flavours), Liquid Smoke (Water, Glucose Syrup, Roast Onion Puree (13%) (Onion, Cane Sugar, Sea Salt), Fried Onion Concentrate (12%) (Onion, Glucose Syrup, Sunflower Oil), Salt (Salt, Anti-Caking Agent (535)), Spirit Vinegar, Corn Starch, Smoked Sugar (1.2%), Smoke Flavour).

**CONTAINS:** Shellfish **MAY CONTAIN:** Fish, Tree Nuts, Wheat, Milk, Peanuts, Lupin, Soy, Eggs and Sesame since this product is manufactured in a facility that process other food products which may contain these ingredients.

**CAUTION:** WHILST ALL CARE IS TAKEN WITH SHUCKING OUR OYSTERS, WE CANNOT GUARANTEE SHELL REMNANTS WILL NOT BE PRESENT.

**COOKING INSTRUCTIONS:** Preheat conventional oven to 210° (200° fan forced). Remove tray from cardboard and plastic packaging and place directly in the oven (white tray is oven-proof).

Bake Oysters Kilpatrick for approx. 15 minutes or until the sauce is gently bubbling at the edges, rest in a warm place for 5 minutes and enjoy!

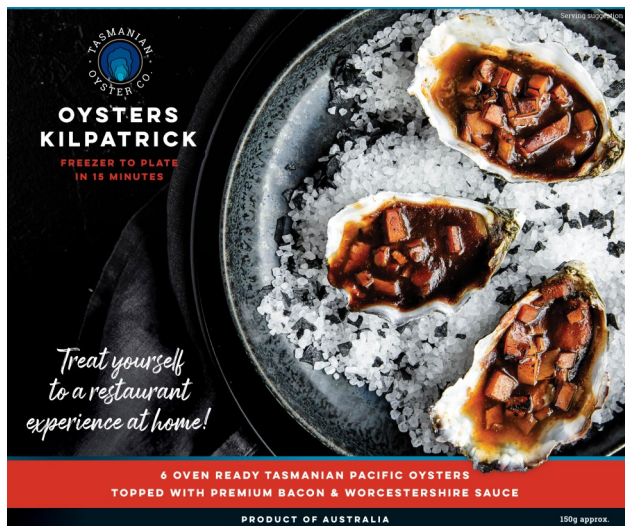
**Food will be very hot when cooked. Do not microwave. Cook from frozen. Product must be fully cooked before consuming. Cooking times may vary depending on your appliance.**

## NUTRITIONAL INFORMATION

SERVING SIZE (l) APPROX 150g	AVERAGE QTY PER SERVING	AVERAGE QTY PER 100g
Energy	478kJ	319kJ
Protein	8.85g	5.9g
Fat, Total	3.75g	2.5g
- Saturated	1.4g	0.9g
Carbohydrate	9.9g	6.6g
- Sugars	8.8g	5.9g
Dietary Fibre	2.6	1.7g
Sodium	1035mg	690mg

## PALLET CONFIGURATION

Cartons per layer	10
Number of layers	4
Cartons per pallet	40
Gross pallet height (cm)	120
Gross pallet weight (kg)	241



**DISCLAIMER:** Tasmanian Oyster Co. endeavours to ensure the information is current. Dated 1/11/21